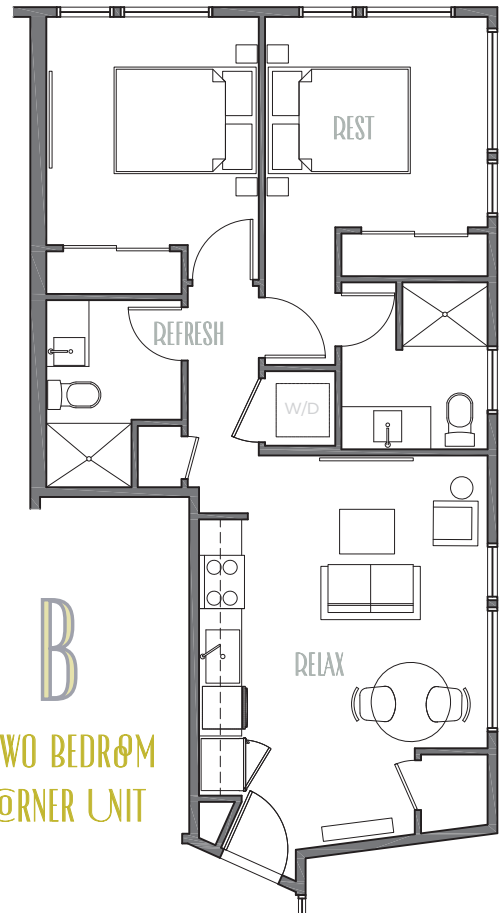


# CROWN

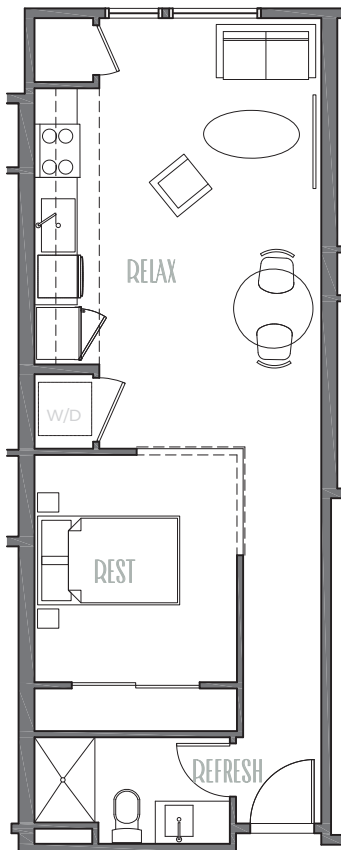
TENTH + CASTLE STREET



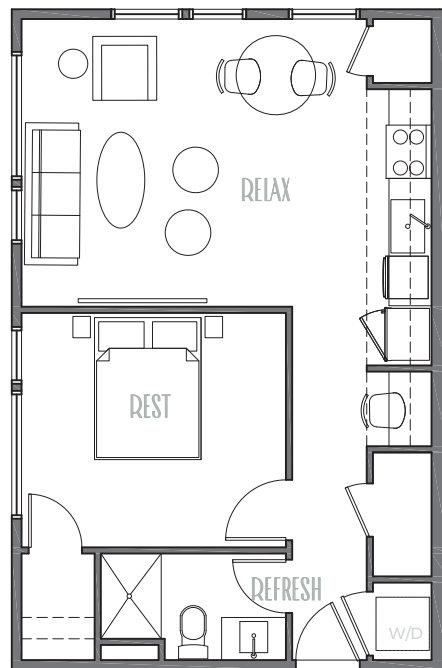
**A** TWO BEDRØM  
@RNER UNIT



**B** TWO BEDRØM  
@RNER UNIT



**C** STUDIO



**D** ONE BEDRØM  
@RNER UNIT  
▪GROUND LEVEL SPACES▪  
HAVE AN URBAN GARDEN

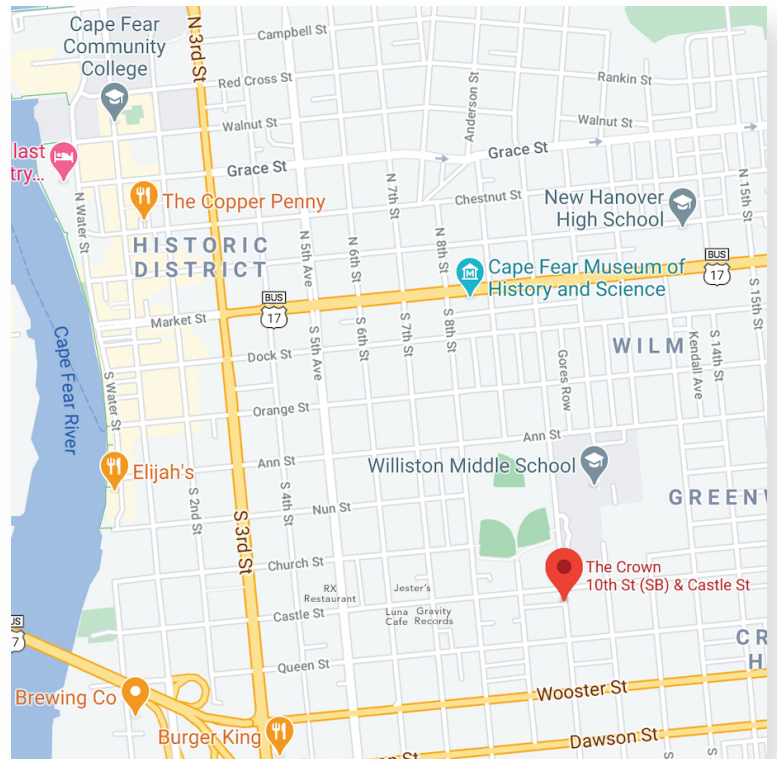


## FEATURES

- New construction
- 9' and 10' ceilings w/ 8' tall interior doors
- 7' tall oversized windows
- Honed slate countertops w/ Wilsonart backsplash
- Stainless appliances by LG (dishwasher, oven, microwave, refrigerator, washer/dryer)
- Back-lit vanity mirrors in the bath
- Luxury vinyl plank flooring throughout
- Ceiling fans in living area and bedroom
- Designer screen shade window coverings
- High efficiency heat pump with digital thermostat

## AMENITIES

- Secure, controlled building access
- Water, sewer, trash included
- Private 300mbps high speed WiFi included
- Non- smoking building and grounds
- Off street parking



For more information: 910.763.7500

[www.tandcnc.com](http://www.tandcnc.com)

401-A Chestnut Street, Monday - Friday, 8:30am to 5pm

All plans, details, square footage, and renderings are approximate and subject to change.

**Town & Country**  
Real Estate